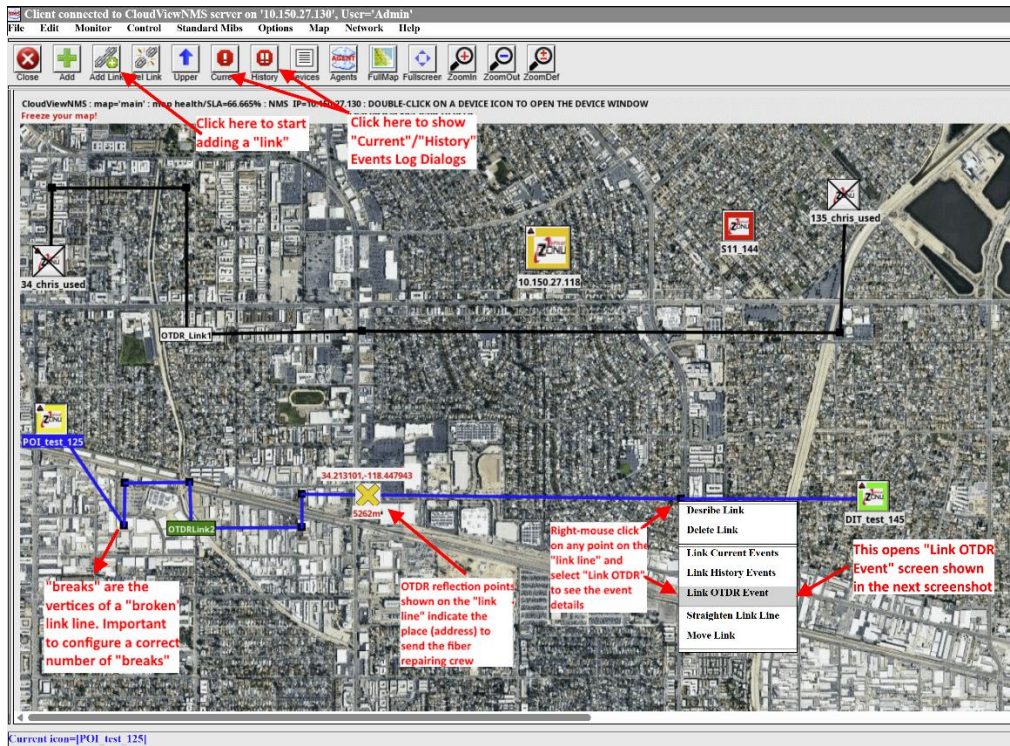
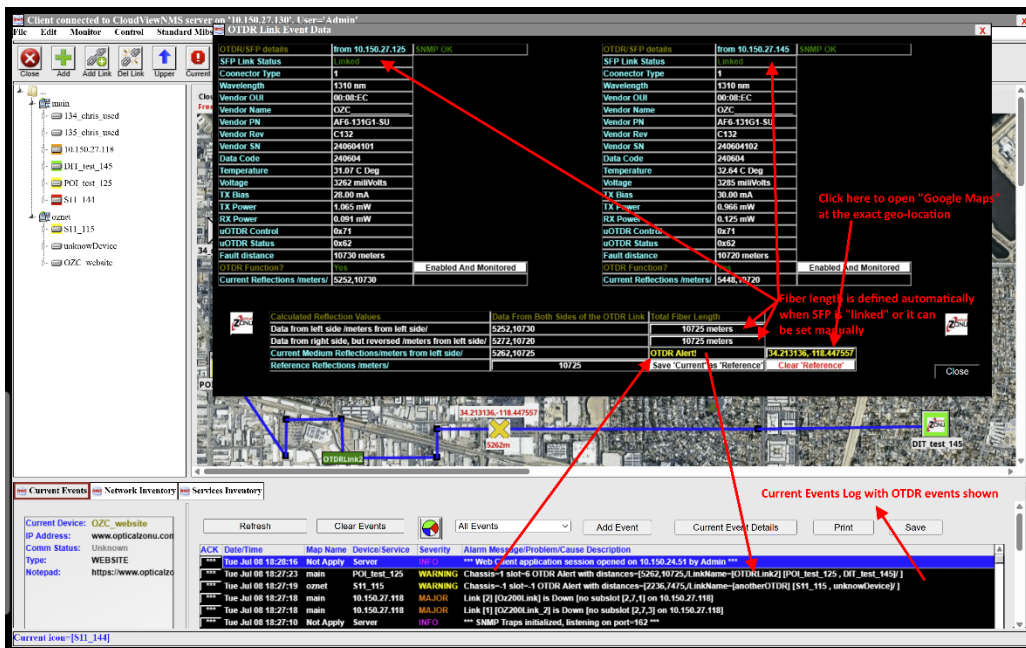


CloudView NMS Server monitoring Optical Zonu devices micro-OTDR-powered fiber link



An HTML5-powered interactive GUI allows you to view your entire network infrastructure with color-coded events. Right-clicking in the popup menu will display the event details. The event can be forwarded via email, SMS text, SNMP Trap, Syslog message, and other interfaces.



Clicking on the yellow geo-coordinates in the above screen or anywhere on the map background image—earlier retrieved from Google Maps— will open Google Maps at that exact location. This enables a thorough exploration of the area—leveraging the full feature set of Google Maps, see the below screenshot.

